



**Your work? Easy.  
You've got the power of one.**

**BradyJet J1000 Industrial Printer  
for terminal block and control  
panel identification**

# So simple, it's second nature

Electrical control panels. They power nearly every piece of equipment in every corner of the world, driving industries and making progress. That's a big responsibility.

The terminal blocks and other components in those control panels carry that responsibility, and identification is key. Since marking components is an intricate process, streamlining your efforts means you'll reap greater productivity.

Get there with the power of one. With just a single easy-to-use system — the BradyJet J1000 Industrial Printer and Brady Workstation software — you can seamlessly integrate your workflow and even minimize waste. There's no longer a need to use printers, materials and software from different manufacturers. And you can share your data across multiple applications, too. Combined, it all makes your marking process so simple, it's second nature.

BRADY



Maintenance



About

J10-BK

et J1000

Project A	Project A	Project A	Panel 12	Panel	A1	A2	A3	A4	A5	A6	A7	A8	A9	A10	A11	A12	A13
Project A	Project A	Project A	Panel 12	Panel	K1	K2	K3	K4	K5	K6	K7	K8	K9	K10	K11	K12	K13
Project A	Project A	Project A	Panel 12	Panel	A14	A15	A16	A17	A18	A19	A20	A21	A22	A23	A24	A25	A26
Project A	Project A	Project A	Panel 12	Panel	K14	K15	K16	K17	K18	K19	K20	K21	K22	K23	K24	K25	K26
Project A	Project A	Project A	Panel 12	Panel	A27	A28	A29	A30	A31	A32	A33	A34	A35	A36	A37	A38	A39

# Key features



## One system

Fuse your control panel identification tasks with the BradyJet J1000. You can even take advantage of the versatility of Brady Workstation software to manage multiple printers, applications and materials.



## Ease of use

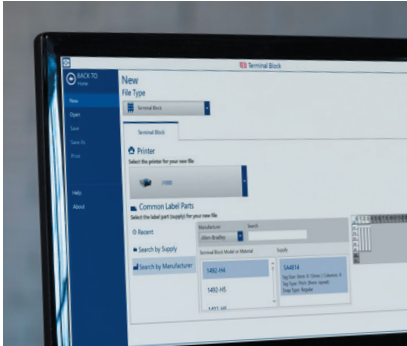
With this single, easy-to-use system, you can:

1. Connect jobs with imported data
2. Create and edit tags
3. Print on a wide range of terminal block and component tags



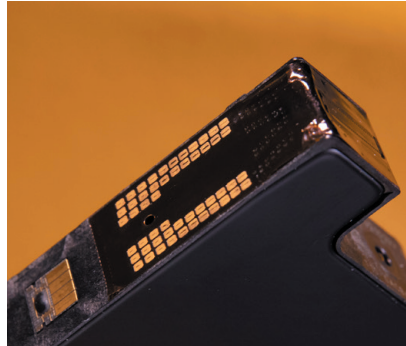
## Less waste

Minimize your waste with new inkjet technology. Because the ink sets within seconds of printing, you don't need UV or even heat lamps to cure it, which can warp tags. Just reuse partial tags instead of throwing them away.



### **Terminal block compatibility**

Look it up — easily. Brady Workstation software gives you an intuitive feature that allows you to look up the best Brady material for more than 1,400 terminal block makes and models.



### **High-tech inkjet**

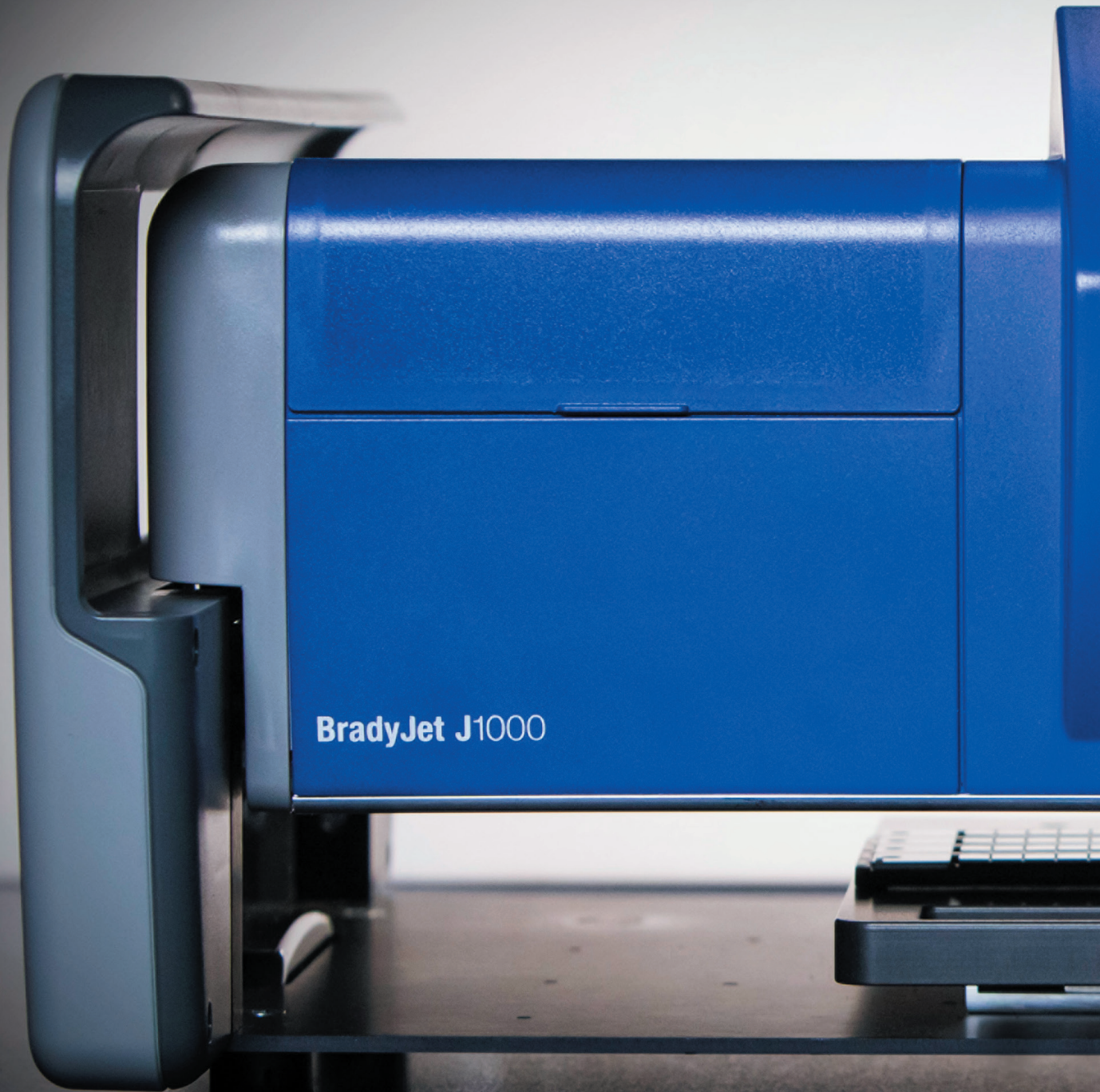
Lower your costs and increase reliability with the BradyJet J1000. Unlike other inkjet alternatives that use separate ink tanks, J1000 uses one disposable ink cartridge with a fully integrated printhead.



### **Tech support**

Whether you're an OEM or panel shop, your production is vital. So, when you have a question or need technical assistance, let our Tech Support team help. This dedicated team gives you what you need — and keeps you going.

# **BradyJet J1000 Industrial Printer**



**BradyJet J1000**



## The way you work

As today's workplace grows in complexity, we've designed a way to simplify it. That way, you get your work done in fewer steps, which is great for efficiency. Here's how to make the most of the way you work:

### Access your ink

Instantly install or replace ink cartridges



### Print with ease

High-tech printing moves over materials on a flatbed card tray





**Control center**

See tasks more clearly on a 5-inch touchscreen with an optimized view angle

**10-second changes**

Change over materials in just 10 seconds flat

**Use a sliding card tray**

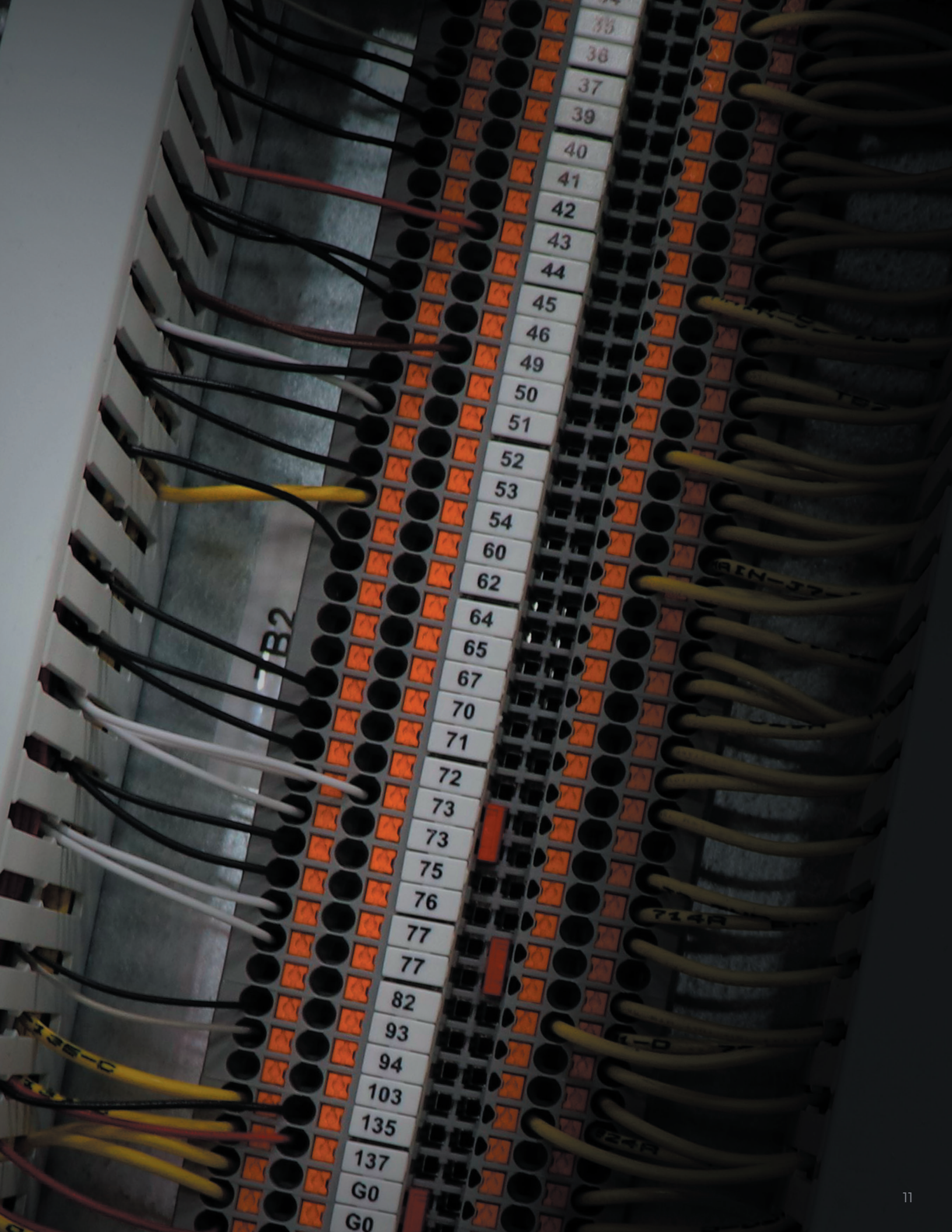
Easily load two rigid cards on this sliding, self-locking card tray

# A shared experience

The way you do business says a lot. It shows what you value. And it's a roadmap for where you'd like to go.

If you value hard work and innovation and look to a future with better solutions — ones that offer greater efficiency and easier ways to work — we're a worthy partner for you. At Brady, we don't just want better, we're committed to it. And, after more than 100 years of making workplaces more efficient, safe and secure, we're ready for 100 more. But why stop there.

What we really want is for your business to be its best. The solutions we offer are flexible — to fit you today, and well into the future, as you grow. Whether that happens with printers, software, materials or automation, know the value you place on finding the right solution now will pave the way for a better future. And that's a shared experience worth having.



TB2

- 35
- 36
- 37
- 39
- 40
- 41
- 42
- 43
- 44
- 45
- 46
- 49
- 50
- 51
- 52
- 53
- 54
- 60
- 62
- 64
- 65
- 67
- 70
- 71
- 72
- 73
- 73
- 75
- 76
- 77
- 77
- 82
- 93
- 94
- 103
- 135
- 137
- G0
- G0

REN-37

714R



BRADY

Panel 5

Panel 5

A53

A54

A55

A56

A57

A58

A59

A60

A61

A62

A63

A64

A66

A67

A68

A69

A70

A71

A72

A73

A74

A75

A76

A81

A82

A83

A84

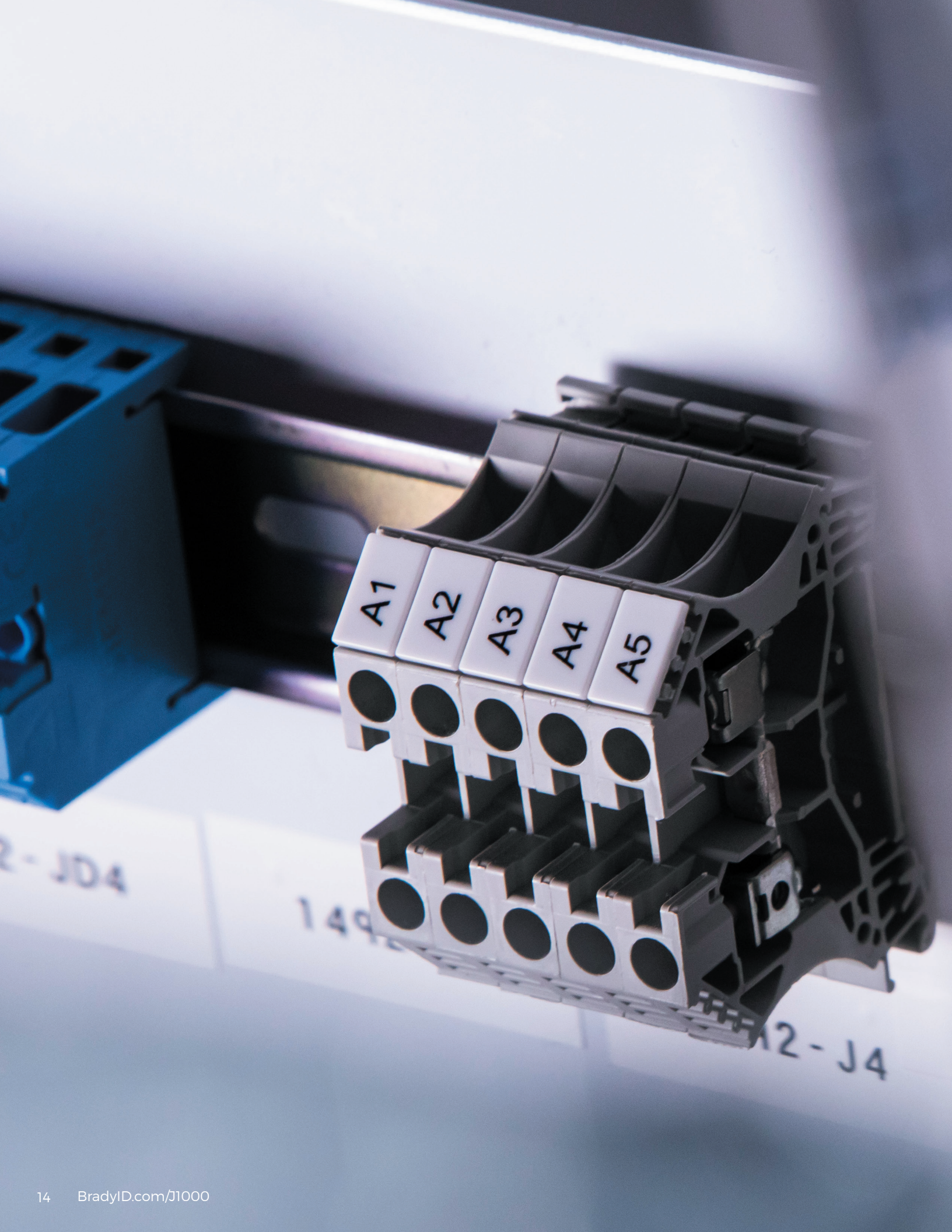
A85

A86

A87

A99





A1

A2

A3

A4

A5

2-JD4

149

12-J4

# A winning combination

Get high performance times three — with the BradyJet J1000 Industrial Printer, Brady Workstation software and these high-performance materials:

## **Terminal block tags**

Professional-looking control panels start with high-quality terminal block tags. Choose from a variety of tag sizes designed to fit the terminal block tags and brands you already use. These high-gloss tags offer crisp, clear identification — especially when paired with the BradyJet J1000. Get terminal block tags in both single and pitch configurations, where tags are linked for easy installation.

## **Electrical component tags**

Enhance the look of your control panel — even on the inside — with these electrical component tags, available with adhesive or the ability to be installed into a rail system. Print on them, then peel off the adhesive base and apply to your electrical component. It's the perfect way to clearly identify control panel interiors for technicians, employees and maintenance workers.

## **Rail and clear cover**

Identify important electrical components by installing a rail system. After using the BradyJet J1000 to print your tags, simply slide them into the rail. Rails are backed with adhesive, so they mount easily to the back panel. For added protection, use a clear cover (sold separately). These rails can be cut to length to accommodate various-sized back panels.

## Material specifications

### Terminal block tags (white B-236 polycarbonate)

Catalog #	Tag width (mm)	Tag height (mm)	Single or pitch	Pitch repeat (mm)	Tags per card	Tags per box	Adapter plate required	Terminal block manufacturers
SA1034	3	8	Pitch	3	120	1,200	AP-GP4T1	Allen-Bradley, Weidmuller, Conta-Clip, Klemсан, Schlegel, Wago
SA1226	4	10	Pitch	4	100	1,400	AP-GP4T1	Phoenix, ABB-Entrelec, Eaton, Schneider Electric, Siemens, Wago
SA4294	4	10	Single		64	1,024	AP-GP4T1	Phoenix, ABB-Entrelec, Eaton, Schneider Electric, Siemens, Wago
SA4813	5	5	Pitch	5	110	1,430	AP-GP5T1	Allen-Bradley, Klemсан, Sprecher + Schuh, Woertz, Weidmuller
SA1232	5	5	Pitch	5	110	2,090	AP-GP5T1	Phoenix, Schneider Electric, Siemens
SA4363	5	5	Pitch	5	110	1,100	AP-GP5T1	Wago, ABB-Entrelec, Connectwell, Weidmuller
SA5465	5	8	Pitch	5	88	1,408	AP-GP4T1	Allen-Bradley, Weidmuller, Conta-Clip, Klemсан, Schlegel, Wago
SA4700	5	9	Pitch	5	88	1,408	AP-GP4T1	Wieland, Legrand
SA4811	5	9	Pitch	5	88	1,408	AP-GP4T1	Allen-Bradley, Klemсан, Sprecher + Schuh, Woertz, Weidmuller
SA1234	5	10	Pitch	5	88	1,408	AP-GP4T1	Phoenix, Schneider Electric, Siemens
SA2610	5	10	Pitch	5	84	1,428	AP-AB4T1	ABB-Entrelec
SA4290	5	10	Pitch	5	88	1,408	AP-GP4T1	Phoenix, ABB-Entrelec, Eaton, Schneider Electric, Siemens, Wago
SA4295	5	10	Single		64	1,024	AP-GP4T1	Phoenix, ABB-Entrelec, Eaton, Schneider Electric, Siemens, Wago
SA4310	5	10	Single		64	1,024	AP-GP4T1	Wieland, Legrand
SA4330	5	10	Single		64	1,024	AP-GP4T1	Allen-Bradley, Weidmuller, Conta-Clip, Klemсан, Schlegel, Wago
SA4335	5	10	Single		64	1,024	AP-GP4T1	Allen-Bradley, Weidmuller, Conta-Clip, Klemсан, Schlegel, Wago
SA4361	5	10	Pitch	5	88	1,408	AP-GP4T1	Wago, ABB-Entrelec, Connectwell, Weidmuller
SA4960	5	10	Single		68	1,020	AP-GP4T1	Siemens
SA5443	5	10	Pitch	5	88	1,408	AP-GP4T1	Allen-Bradley, Weidmuller, Conta-Clip, Klemсан, Schlegel, Wago
SA4812	5	12	Pitch	5	88	1,408	AP-GP4T1	Allen-Bradley, Klemсан, Sprecher + Schuh, Woertz, Weidmuller
SA4340	5	15	Single		64	1,024	AP-GP4T1	Allen-Bradley, Weidmuller, Conta-Clip, Klemсан, Schlegel, Wago
SA1228	6	5	Pitch	6	90	2,070	AP-GP5T1	Phoenix, Schneider Electric, Siemens
SA4810	6	9	Pitch	6	72	1,008	AP-GP4T1	Allen-Bradley, Klemсан, Sprecher + Schuh, Woertz, Weidmuller
SA4350	6	10	Single		64	1,024	AP-GP4T1	Phoenix, ABB-Entrelec, Eaton, Schneider Electric, Siemens, Wago
SA4390	6	10	Single		64	1,024	AP-GP4T1	Allen-Bradley, Weidmuller, Conta-Clip, Klemсан, Schlegel, Wago
SA4441	6	10	Pitch	6	72	1,008	AP-GP4T1	Allen-Bradley, Weidmuller, Conta-Clip, Klemсан, Schlegel, Wago
SA4460	6	10	Pitch	6	72	1,008	AP-GP4T1	Phoenix, ABB-Entrelec, Eaton, Schneider Electric, Siemens, Wago
SA4800	6	12	Pitch	6	72	1,008	AP-GP4T1	Allen-Bradley, Klemсан, Sprecher + Schuh, Woertz, Weidmuller
SA2625	6	12	Pitch	6	60	1,500	AP-AB4T1	ABB-Entrelec (SNK)
SA4360	6	15	Single		64	1,024	AP-GP4T1	Phoenix, ABB-Entrelec, Eaton, Schneider Electric, Siemens, Wago
SA4470	8	12	Pitch	8	40	1,000	AP-AB4T1	ABB-Entrelec (SNK)
SA4814	8	12	Pitch	8	52	936	AP-GP4T1	Allen-Bradley, Klemсан, Sprecher + Schuh, Woertz, Weidmuller
SA4296	8	10	Pitch	8	48	768	AP-GP4T1	Phoenix, ABB-Entrelec, Eaton, Schneider Electric, Siemens, Wago
SA4298	10	10	Pitch	10	40	640	AP-GP4T1	Phoenix, ABB-Entrelec, Eaton, Schneider Electric, Siemens, Wago



**Electrical component tags (white B-236 polycarbonate)**

Catalog #	Tag width (mm)	Tag height (mm)	Single or pitch	Adhesive	Tags per card	Tags per box	Adapter plate Required
SA911A	9	11	Single	Yes	44	1,408	AP-GP4T1
SA915A	9	15	Single	Yes	44	1,320	AP-GP4T1
T1527B	15	27	Single	No	16	480	AP-GP4T1

**Printer**

Catalog #	Description
J1000-BWSPWID	BradyJet J1000 with Brady Workstation Product and Wire Identification Software Suite

**Ink cartridge**

J10-BK	J10 Ink Cartridge BLK
--------	-----------------------

**Rail and clear cover**

GDTACO	Clear Rail Cover, 1 m (25 per pack)
GDTAAD	Black Rail with Adhesive, 1 m (25 per pack)

**Accessories**

J1000-PAD KIT	J1000 Service Station Pad Kit
AP-GP5T1	Adapter plate, 5-Column
AP-AB4T1	Adapter plate, 4-Column, ABB-ENT
AP-GP4T1	Adapter plate, 4-Column



## Printer specifications

<b>Description</b>	Easy-to-use, reliable flatbed inkjet printer for creating rigid electrical component tags, including terminal block tags, while virtually eliminating all material waste		
<b>Applications</b>	Electrical component tags, terminal block tags		
<b>Label material types</b>	Inkjet-receptive rigid polycarbonate cards		
<b>Includes</b>	Printer, ink cartridge, USB with drivers and manuals, power cord, Quick Start Guide, adapter plates		
<b>Warranty</b>	1 year		
<b>Features</b>			
<b>Print resolution</b>	Up to 1,200 DPI	<b>Mode of operation</b>	Peripheral mode
<b>Color printing capability</b>	Mono-color black	<b>Print technology</b>	Thermal inkjet
<b>Maximum print speed</b>	Up to 2 cards in 40 sec.	<b>No. printheads / cartridge</b>	1 printhead per cartridge
<b>Maximum print width</b>	5.9 in. (150 mm)	<b>Maximum print height</b>	2 in. (50 mm)
<b>Maximum print length</b>	6.7 in. (170 mm)	<b>Media sensor adjustment</b>	None
<b>Interface</b>			
<b>Display type</b>	Color touchscreen	<b>Print preview feature</b>	via Brady Workstation
<b>Display size</b>	5 in.	<b>Supply remaining gauge</b>	via J1000 status monitor and printer display
<b>Display resolution</b>	800 x 480 pixel	<b>Languages</b>	English, Spanish, French
<b>Media / supplies information</b>			
<b>Compatible inks</b>	J10-BK	<b>Quantity of stock media parts</b>	37
<b>Materials supported</b>	Rigid cards (B-236)	<b>Custom media widths available</b>	No
<b>Ink and label installation</b>	Change rigid cards in fewer than 10 seconds, change ink in fewer than 20 seconds	<b>Replacement ink pads</b>	J1000-PAD KIT
<b>Calibration required</b>	None		
<b>Optional accessories</b>			
<b>Accessories available</b>	Replacement ink cartridges, replacement ink pad service station, replacement adapter plates		
<b>Software and connectivity</b>			
<b>Connectivity options</b>	USB		
<b>Software compatibility</b>	Brady Workstation		
<b>Operating system</b>	Windows 7 / 8 / 10+		
<b>Physical / operational characteristics</b>			
<b>Dimensions in. (W x L x H)</b>	18.7 x 20.6 x 10.2 (47.4 cm x 52.2 cm x 26.0 cm)	<b>Operating humidity range</b>	50% - 70% (no condensation)
<b>Weight</b>	23 lbs (10 kg)	<b>Storage humidity range</b>	50% - 70% (no condensation)
<b>Operating temperature range</b>	68° - 86° F (18° - 32° C)	<b>Power supply voltage</b>	110-240 VAC 50/60Hz 120W max
<b>Storage temperature range</b>	68° - 86° F (18° - 32° C)	<b>Auto shutoff / power conserve</b>	It is recommended that the printer remain plugged in and turned on
<b>Agency approvals / regulatory compliance</b>			
<b>Enables industry compliance</b>	UL, FCC Class A, cUL, IC/ISED, CE, 2014/35/EU LVD, 2014/30/EU EMCD, 2011/65/EU RoHS, MEX CoC		
<b>Safety data sheet ink</b>	Available on Brady websites		

## We identify and protect people, products and places.

For more information or to learn more about our innovative products, visit [BradyID.com](http://BradyID.com) or call 1-888-272-3946.



Y4913648 MS4913648

USA  
Customer Service: 1-888-272-3946  
[BradyID.com](http://BradyID.com)

Canada  
Customer Service: 1-800-263-6179  
[BradyCanada.ca](http://BradyCanada.ca)

Mexico  
Customer Service: 1-800-262-7777  
Inside Sales: 1-800-262-7777 ext 177  
[BradyID.com.mx](http://BradyID.com.mx)

